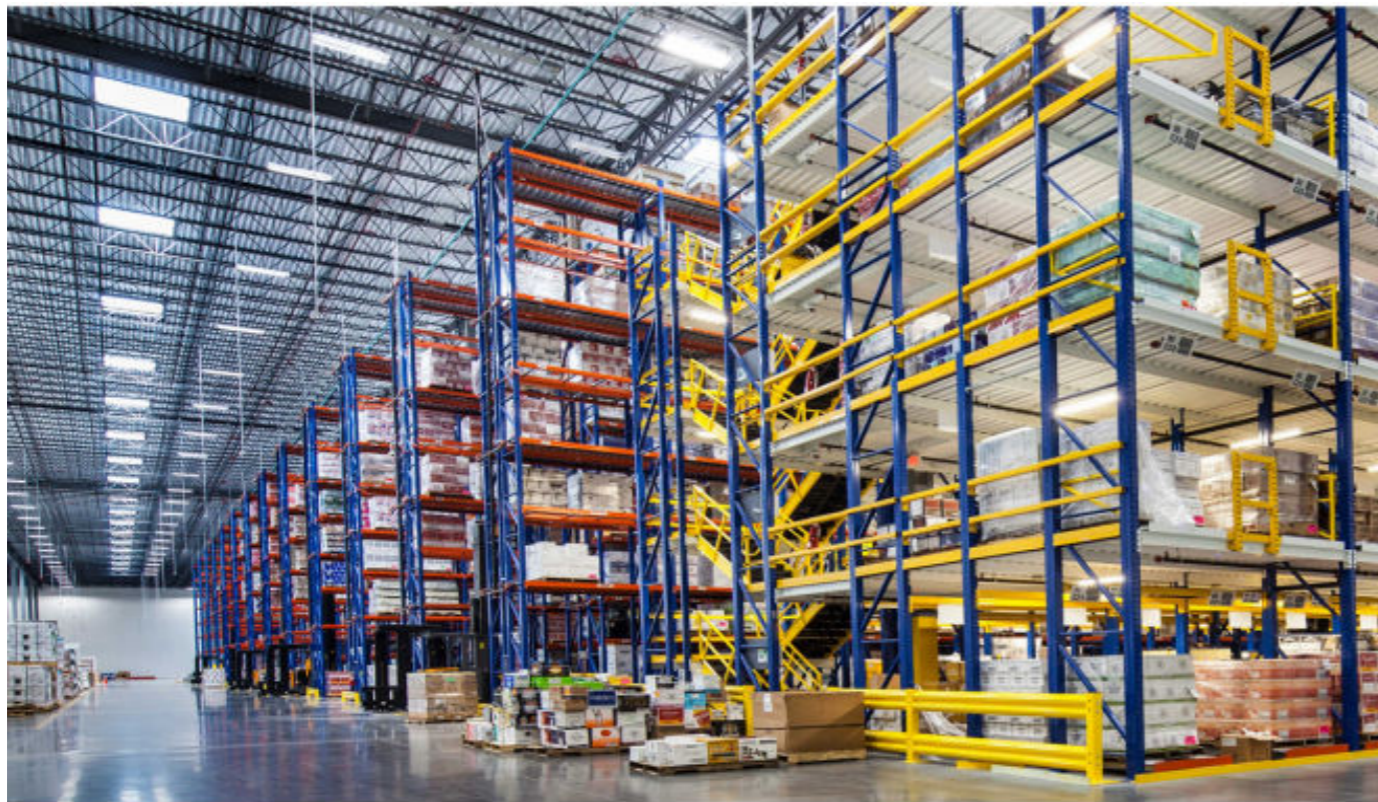


## Lp7850 Intelligent Shelf Warehousing System

### Warehouse Material Real-time Control Solu

Warehouse inventory inaccuracy, persistent mismatches between system records and physical stock, coupled with the inability to locate materials in designated storage positions despite system-indicated availability, are daily operational anomalies disrupting production schedules and posing critical warehouse management challenges.



### Industry Characteristics ○○○

- The pain points of warehousing are efficiency and cost
- There are many errors in the classification and selection of materials in manual operations
- Not familiar with the storage location, resulting in low efficiency
- Material collection, taking less and more is prone to errors
- The discrepancy between the account and actual inventory results in production delays or duplicate orders, leading to inventory waste
- The cumbersome recording results in discrepancies between the material requisition documents and the actual material requisition, and the updates are not timely.
- The record of the person who received the material is inconsistent with the actual person who received it, and the process cannot be traced back

### System Function ○○○

- Warehouse intelligent material management systems enable real-time control of critical material quantities (via live data auditing) with centralized visualization on computer interfaces.
- During material retrieval, the electronic label of the corresponding item illuminates for guidance and deactivates upon complete quantity pickup.
- Over-Picking/Incorrect Material Retrieval Alert
- Safety Stock Threshold Alert

## System Overview ○○○



## Components of the System ○○○

